

€ =

It pays to drive a Borum



IT'S STRAIGHTFORWARD

**BORUM**

# BEST-IN-CLASS LINE MARKING MACHINES AND EQUIPMENT

**Borum is one of the world's leading line marking machine and equipment manufacturers. We supply best-in-class, easy to-operate line marking machines to large international companies, as well as small family-owned operators around the world.**

Over the past years, we've built up a global network of sales staff and service technicians, to ensure that you get great local service and sound advice.

We stay in close contact with our customers, and thanks to the valuable market feedback, our product development process and customer training programmes are tailored to help you get the best performance from your Borum marking machines.

With our well designed product portfolio, Borum line marking machines and equipment ensure maximum uptime, high profitability, excellent operator comfort and reliability.

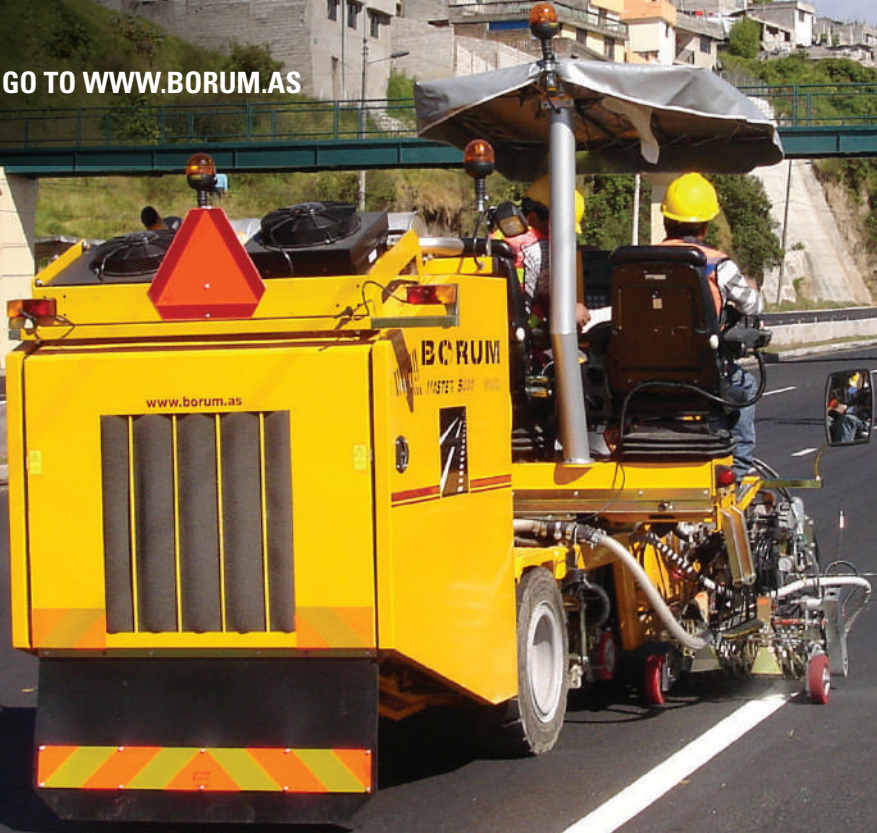
Let us help you make your line marking business even more successful.

-it's straightforward

The Borum Team



PLEASE GO TO [WWW.BORUM.AS](http://WWW.BORUM.AS)



# SETTING NEW STANDARDS IN LINE MARKING

**All Borum machines can be supplied to work with either cold paint, hot thermoplastic or two-component cold plastic - and a variety of application methods.**

Line markings play a vital role in road safety and line marking quality and durability standards get tougher each year.

That's why we conduct in-depth research and use our extensive industry know-how to ensure our line marking machines and technologies stay ahead of performance specifications and quality control demands - and continue to set industry standards.

But no matter what material or line type you choose, marking with a Borum machine is straightforward and easy.



 | BASIC LINE

 | CHESS

 | AGGLOMERATE

 | LONGFLEX

 | RIB LINE

 | EDGEFLEX

 | DOTS

 | DOT'N LINE



# MEETING YOUR CAPACITY AND APPLICATION REQUIREMENTS

From cities and highways to motorways and mega-roads or airports, there's a Borum machine designed to meet your line marking needs. Each model offers a variety of features to meet varying capacity and application requirements.

When choosing your next machine you need to consider the following:

## WHICH SIZE MACHINE?

Borum machines come in a variety of sizes. Evaluate your job types, will you mainly mark in city, motorways or airports?



## WHICH MATERIAL?

There are three line marking materials to choose from: Thermoplastic (hot), 2-component (cold) and cold paint materials. Which material are you going to apply?



## WHICH APPLICATION METHOD?

Which lines are requested in your area? Choose between flat lines (type 1) or profiled lines (type 2) and decide upon your equipment. You can work with one application method or multiple ones.



**BY APPLICATION  
METHOD**



| **SPRAY**



| **EXTRUSION**



| **RIB LINE**



| **DOTS**



| **AGGLOMERATE**

**BY MATERIAL**



| **COLD PAINT**



| **2 COMPONENT**



| **THERMOPLASTIC**



| **THERMO / COLD**

**BY DOMAIN**



| **CITY**



| **MAIN ROAD**



| **MOTORWAY**



| **AIRPORT**

# BORUM AIRPORT MARKING SOLUTIONS

**With special requirements and large areas to cover, runway marking machines need to be extremely efficient and well equipped in order to keep the runway closures and downtime to a minimum.**

Borum provides a wide range of advanced airport self-propelled line marking machines that can be tailored to the customers' requirements and needs.

In accordance with the line width you require, a wide retainer and up to 5 paint spray guns and 5 glass bean guns can be mounted. This assures that the application is performed in a single pass and can be up to 125 cm depending on line thickness, work conditions, and application speed.

Borum cold paint application machines can also be equipped with more material tanks (and separate airless pumps) so that multi-color marking can be carried out simultaneously.

Check out [www.borum.as](http://www.borum.as) for more information.





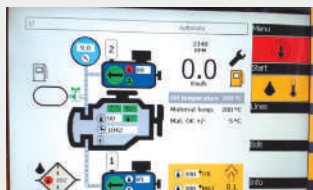
# BORUM LINEMASTER TAKES LINE MARKING TO NEW LEVELS

**With an intuitive Borum LineMaster on-board, a new Borum machine is not only the most intelligent machine on the market - it's also the easiest to operate.**

The Borum LineMaster computer offers:

- Effortless transfer of the daily marking report to an office computer via USB stick
- An 8" display with excellent visibility in sunshine or darkness
- Easy adjustment of all important parameters during marking
- Optional GPS module, which records line marking positions
- Storage of up to 99 different line types arranged in up to 30 marking programs
- A choice of languages

Programmed to make life easier for everybody, from the operator to administration staff, the Borum LineMaster gives you total control of all your road marking tasks, from line application and pre-marking to reporting and invoicing.





- 8" DISPLAY
- EASY AJUSTMENT
- DAILY MARKING REPORT
- GPS MODULE
- 99 DIFFERENT LINE TYPES
- CHOICE OF LANGUAGE

# ADDITIONAL PRODUCTS

Borum also offers a range of additional products



## THERMOPLASTIC PREHEATERS

For melting and mixing the thermoplastic material before application



## TRAILERS FOR MANUAL WORK

Trailers for manual line marking jobs



## MANUAL SCREED BOXES

Ideal for small manual line marking jobs



## DRYERS

Dries wet surfaces and removes dirt



## ERASERS

For trouble-free line removal



BORUM INDUSTRI A/S

SEE OUR PRODUCT DATA SHEETS ON [WWW.BORUM.AS](http://WWW.BORUM.AS)

# BORUM TOTAL SOLUTIONS — IT'S STRAIGHTFORWARD

**At Borum, we know that the success of your business depends on reliable equipment that gets the job done - and does it well.**

Our experienced sales team provides expert advice on the right equipment for your road marking tasks. And with each new machine sold, we can offer onsite training for your staff to ensure an easy and profitable start-up.

To help meet the need for well-trained road marking staff, we have also launched the Borum Road Marking Academy, designed to improve your profitability and the quality of your road markings.

If you need our help with one of your machines, our dedicated customer service team is on-hand to help. We stock an extensive range of spare parts that can be shipped anywhere in the world within 24 hours. And if we can't find a solution over the phone, our trained local technicians provide quick onsite service.







DEDICATION IS IN OUR DNA

Borum A/S | Højvangsvej 10, Hadbjerg | DK-8370 Hadsten | Tel. +45 87 613 213 | Fax +45 87 613 214  
info@borum.as | www.borum.as