

PHOTOS MAY SHOW OPTIONAL OR CUSTOMISED EQUIPMENT.

BM 5000 BASIC MACHINE

The BM 5000 series provides you with a variety of high capacity line marking machines de-signed for large scale jobs such as marking highways, motorways or airport runways. The material tank capacity can be up to 780 liters for thermoplastic, 2x440 liters or 1000 liters for cold paint and 2-component material. The possibility for the large material capacity naturally gives fewer stops during the day for refilling.

BM 5000 is also an excellent choice for road marking jobs in hilly areas. The double speed wheel motors allow a max driving angle of 30%.

The BM 5000 has a two-seat slidable drive and operator section for flexible working on the left or right side.

Easy access and servicing of the machine through large doors to the engine room.

KNOWING THE BM 5000

OPERATOR SECTION

Quick and easy change from side to side for marking left and right. Dual torque steering - good directional stability. Cruise control can be added as optional equipment.

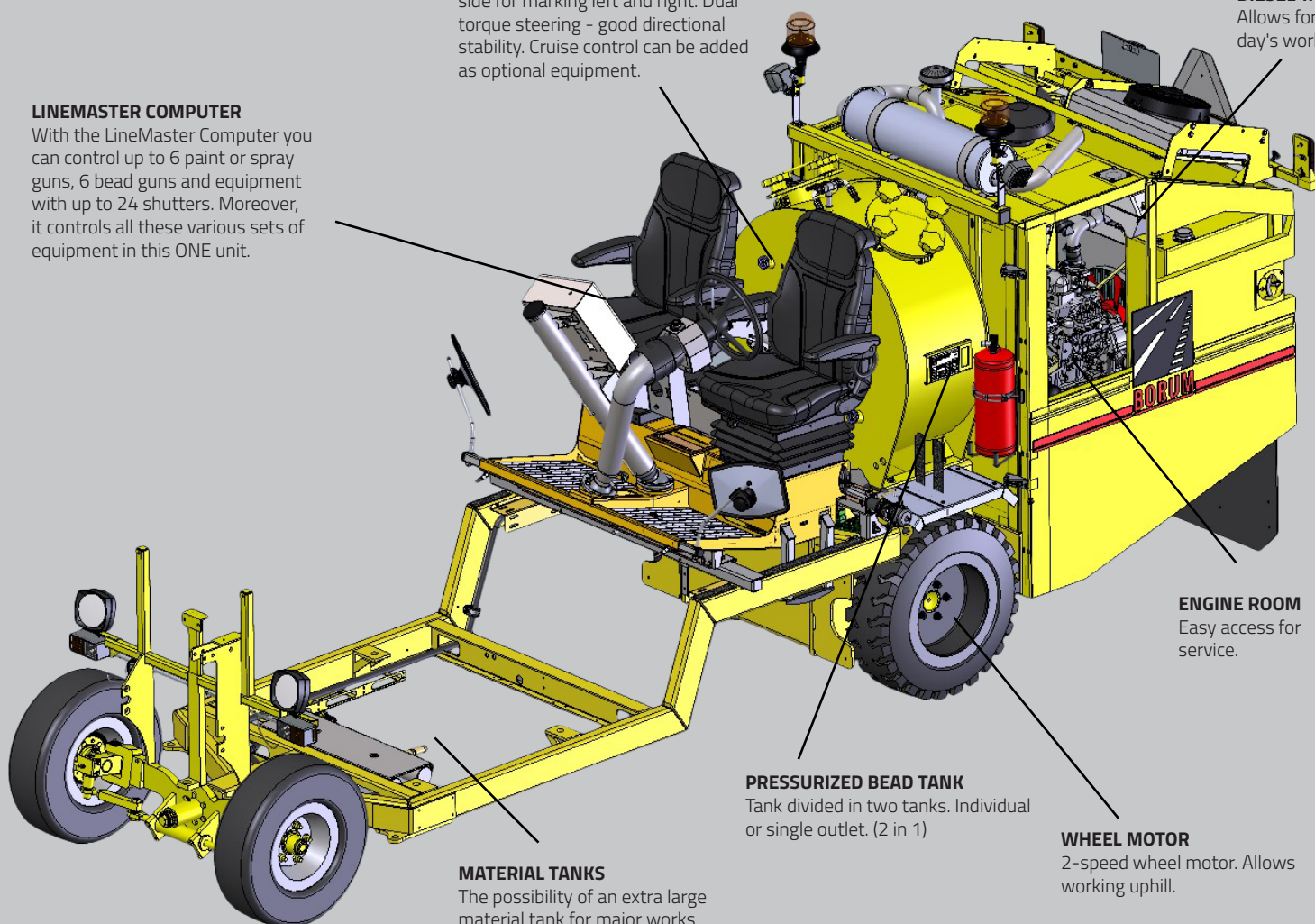
FULL REAR VIEW

DIESEL TANKS

Allows for a full day's work.

LINEMASTER COMPUTER

With the LineMaster Computer you can control up to 6 paint or spray guns, 6 bead guns and equipment with up to 24 shutters. Moreover, it controls all these various sets of equipment in this ONE unit.



ENGINE ROOM

Easy access for service.

PRESSURIZED BEAD TANK

Tank divided in two tanks. Individual or single outlet. (2 in 1)

WHEEL MOTOR

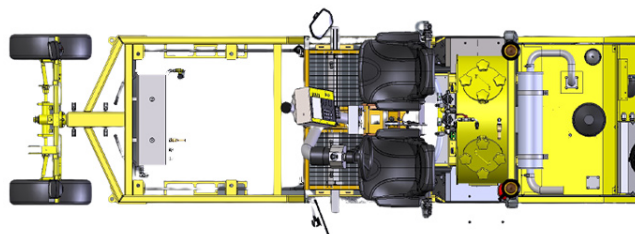
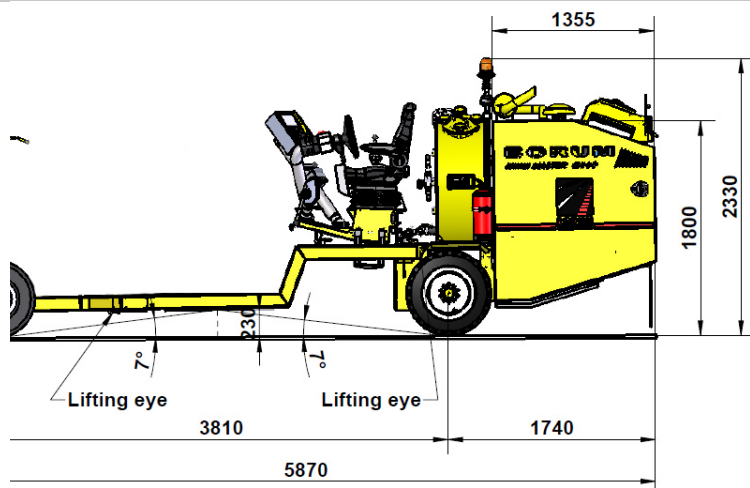
2-speed wheel motor. Allows working uphill.

MATERIAL TANKS

The possibility of an extra large material tank for major works ensures the most efficient workday and fast progression of the road works.

CHASSIS

Solid double-frame construction



TECHNICAL SPECIFICATIONS

BM 5000

ENGINE

Manufacturer	Kubota
Type	Turbo (Diesel)
Cooling	Water
Cylinder	4 stroke 3800 cm3
RatedPower	74 KW
Approval	EU Stage IIIA resp. TIER 3

COMPRESSOR

Compressor Capacity	Choice of 1-2 compressors can give 1800 - 3600 L/min @ 10 bar. Integrated oil-cooling system. Air-cooler incl. water separator
---------------------	--

FILLING CAPACITIES

Fuel tank capacity	180 L (2 x 90 L) - Diesel
Hydraulic tank size	93 L
Bead capacity	330 L (2 x 165 L). Pressurized (max 3 bars)

MATERIAL TANK

Material Tank	450L, 630L or 780L for thermoplastic pressurized tanks 445L, 585L or 710L for thermoplastic non-pressurized tanks 2x440L or 1000L pressurized tank for cold paint and 2 component
---------------	---

DRIVING PROPERTIES

Drive angle	12.5 degrees / 22% (low gear 7200 kg)
Turning radius	4.90 m.
Steering	Dual torque steering

TRANSMISSION

Hydrostatic transmission	For variable speed
Speed	Low gear 0-12 km/h, high gear 0-24 km/h

ELECTRICAL SYSTEM

Electrical system	12 V / 150 Amp
-------------------	----------------

CONTROL UNIT

Borum LineMaster	Program up to 99 different line types. Organise lines in up to 30 marking programs. 8" display. Transfer of daily marking reports. Data about road marking jobs can be accessed online (optional).
------------------	--

COLOUR

Colour	RAL 1007 (Other colours available on request)
--------	---

DIMENSIONS

Length	5350 mm
Width	1300 mm
Height	2250 mm (Without Beacon)

ADDITIONAL EQUIPMENT

The additional equipment can be mounted on the machine according to your requirements. They are not necessary for the running of the machine but add to the comfort of the machine driver or to the functionality of the machine.



Pre-marking system with paint can



BM Online



Air drier for bead tank



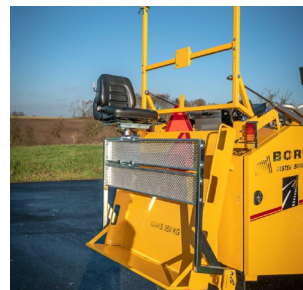
Bead alarm mounted on bead gun



Pointer turning with steering
With hydraulic lifting system



Bar with pneumatic lift for mounting warning lights
(Comes without lights)



Cone holder



Remote control for BM Lin-eMaster



Cruise control



Sunshade with 1 rotating light



Pre-marking system with paint gun



Airknife



Ejector filling of bead tank



Fixed pointer
With hydraulic lifting system



Hydraulic broom